

ATENZZA

ATENZZA OUTDOOR S.L.
NIF: B-42613471
Pol. Ind. El Plà
C/ Jacquard - Parcela 6 N.18 / Nave 1
46870 Ontinyent (Valencia)
622706746
at.info@atenzzaoutdoor.com

Mantenimiento Fácil/Easy Care



FIBRA ACRÍLICA A COLOR/COLOR ACRYLIC FIBRE

Hilo / Yarn 100% Fibra acrílica 100% Dralon®
100 % Acrylic Fibre 100% Dralon®

275 g/m²: **Urdimbre / Warp** 31 hilos x cm Nm 2/40.000
Trama / Weave 17 pasadas x cm Nm 2/40.000

Acabado / Finish Repelente al agua / Water - repellent
Especial HQ Anti bacterias / Anti
manchas / Anti moho
Special HQ Anti bacterias / Anti
stain / Anti mildew

Ancho / Width 150 cm / 59" ± 1%

Largo pieza / length of roll 50 m / 65,64 yds

Peso / Weigth m² 275 g / m² ± 5%

*UNE 53352

Columna hidrófuga /
Waterproof column 150 mm

*UNE EN ISO 20811

Repelencia al aceite /
Oil Repellency UNE-EN ISO 14419: 2010 8/8

Repelencia al agua /
Water Repellency Método 3M Test II 10/10
Method 3M Test II 10/10

Resistencia a la tracción
y alargamiento a la rotura

Longitudinal/ Lengthwise	Fuerza máxima (N)/ Max average load (N)	Alargamiento a la fuerza max (%) Average elongation (%)
	1600	28,5%
Transversal/ Crosswise	580	19,5%

Determination of breakings
Strength and elongation

*UNE EN ISO 13934 - 1 :2013

Solidez del color a la luz /
Colour Fastness to light Grado/Grade
7/8-8 Escala Azules / Blue Scale
Grado/Grade
4/5-5 Escala Grises / Grey Scale
*UNE EN ISO 105 B02

Solidez del color al agua clorada /
Color Fastness to chlorinated water 5 sobre 5
* UNE EN ISO 105 E03

Solidez del color al agua del mar /
Color Fastness to sea water 5 sobre 5
* UNE EN ISO 105 E02

 dralon®


CONFIDENCE
IN TEXTILES
Tested for harmful substances
according to Oeko-Tex® Standard 100
SHAO 095780 TESTEX



Fabricado en España
Made in Spain



CÍES

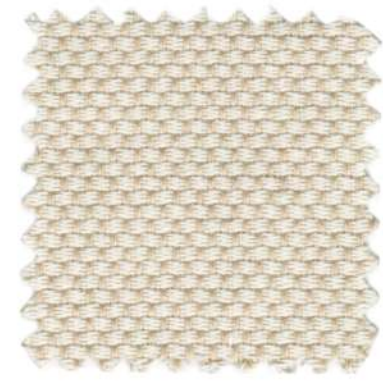
CÍES



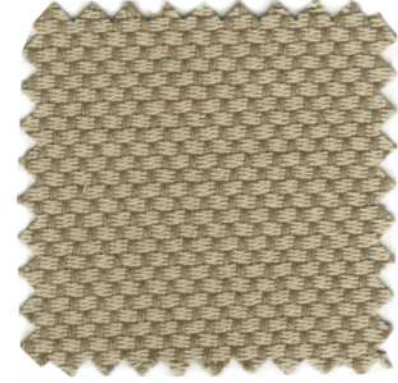
01



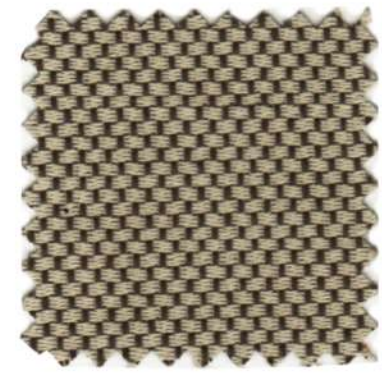
02



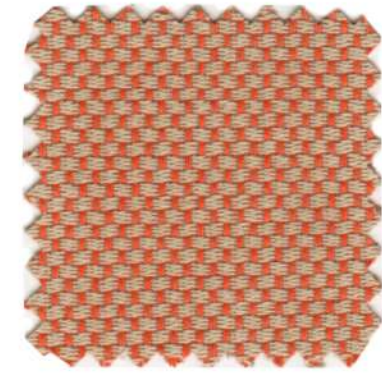
03



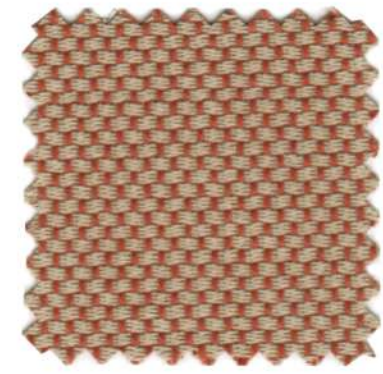
06



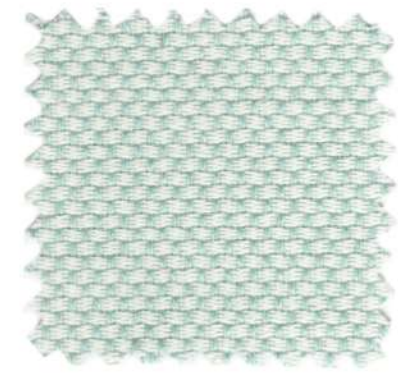
08



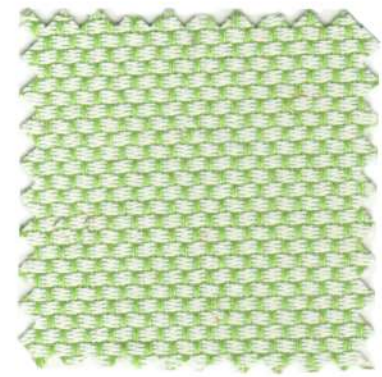
09



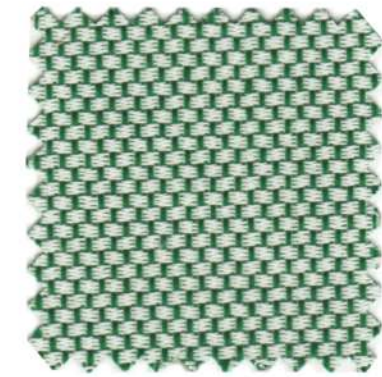
11



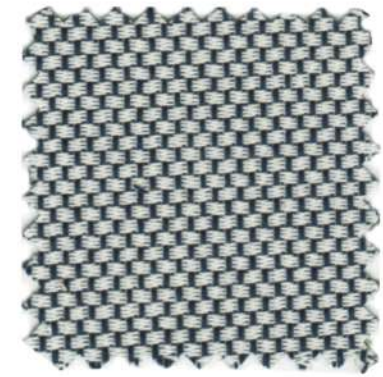
13



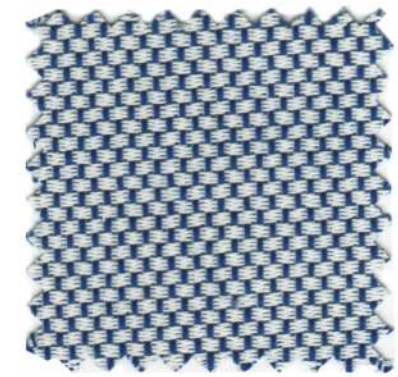
14



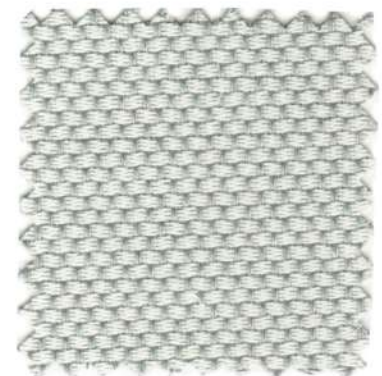
15



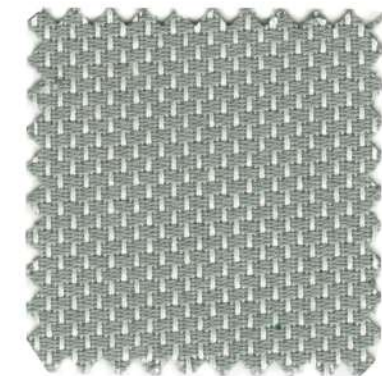
17



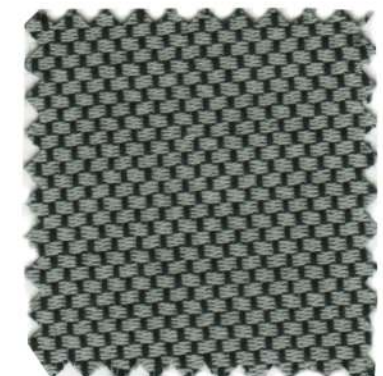
19



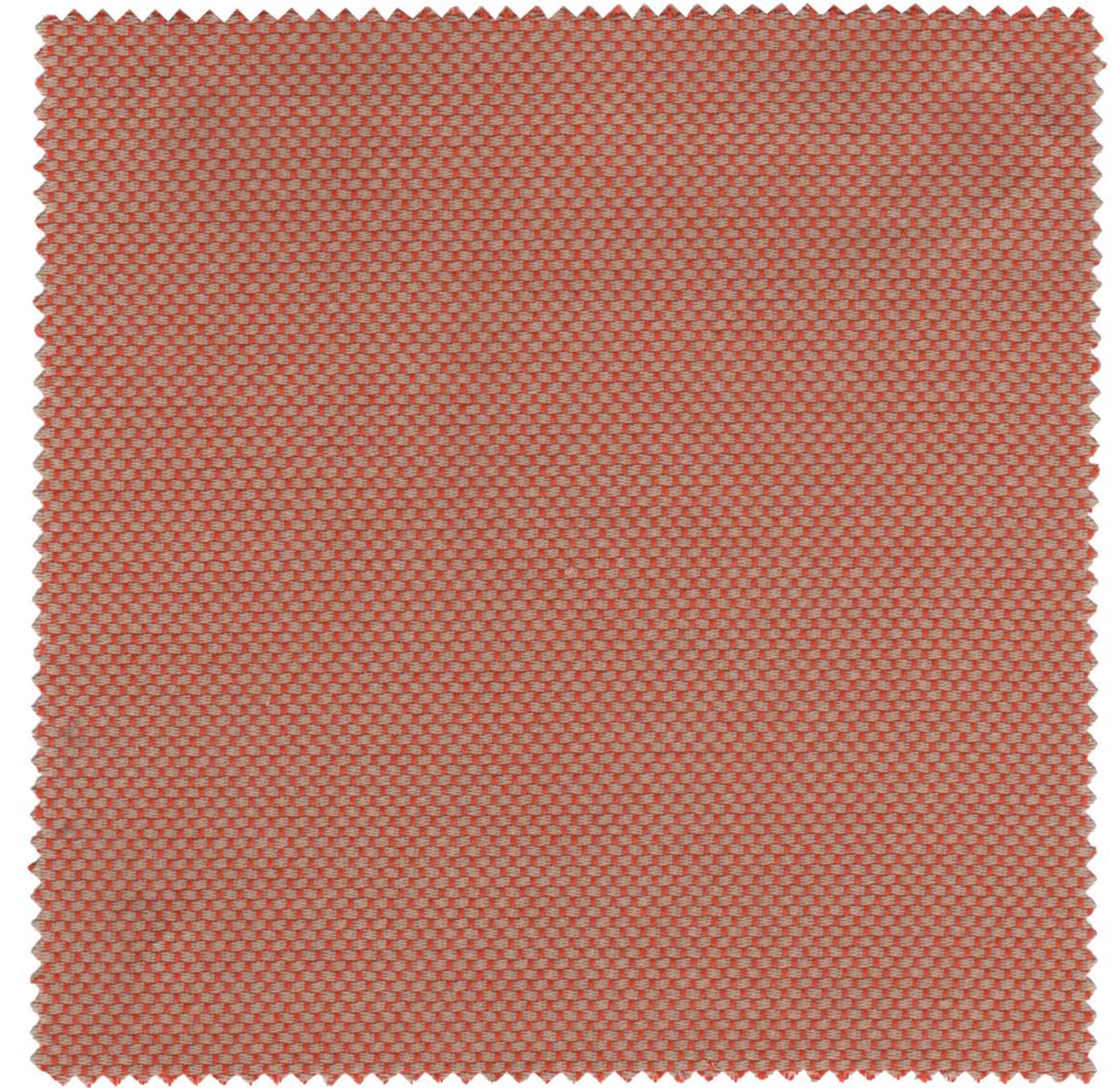
22



23



27



09

